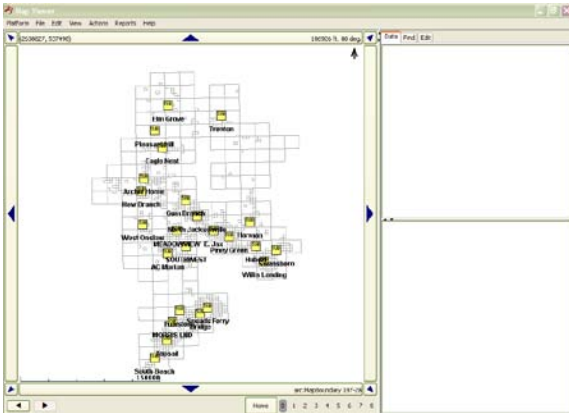


Partner Software Map Viewer Tutorial

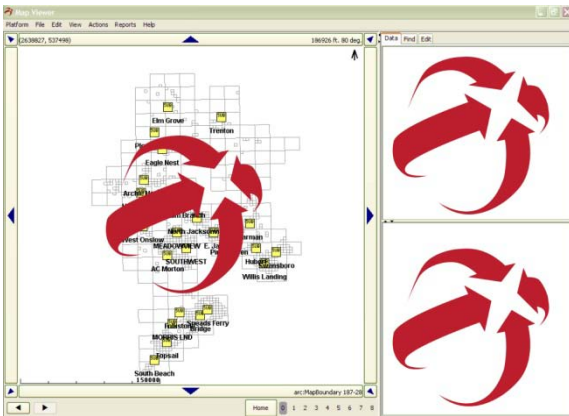
This tutorial will give an overview with images of the features of the Map Viewer application.

Part A: Working with the Map

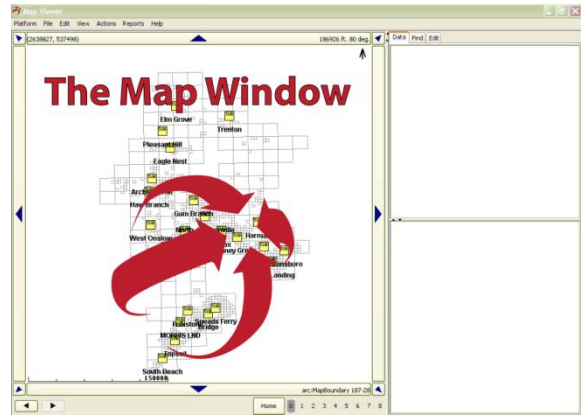
This is the main screen of the Partner Map Viewer Interface:



The screen contains three separate windows (indicated using Partner's Logo):

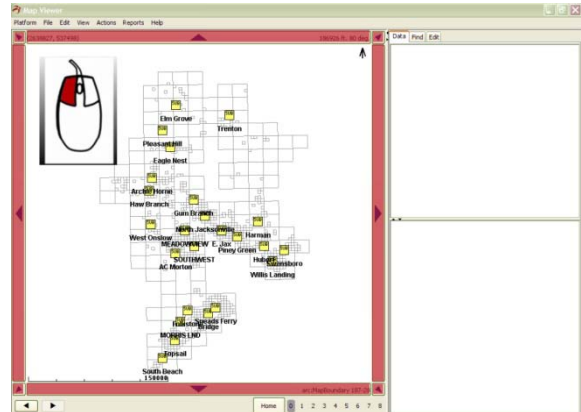


The area where most of the navigation is performed is the Map Window (shown at the top of the next column):

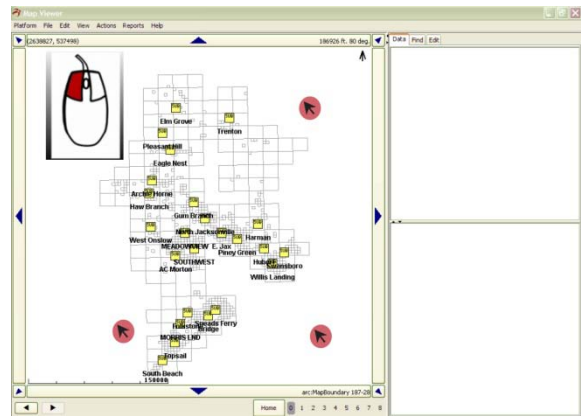


First, we'll look at the controls used for moving around the map, what we call "panning." This panning can be performed in one of three different ways:

1. By selecting the arrow buttons that surround the map viewing. Select these buttons by left clicking with your mouse.



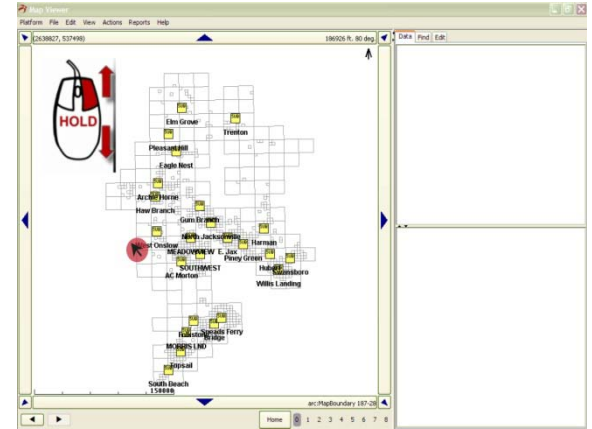
2. By left clicking and holding your cursor on an empty area of the map and then dragging your cursor.



3. By using certain buttons on your keyboard: the directional arrows, the number pad (keys 2,4,6 and 8) or the alphabet (keys A,S,D and W).

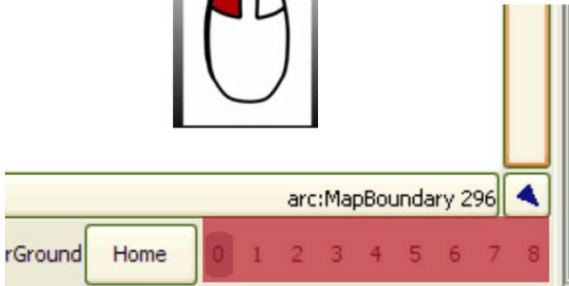
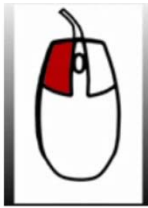


back on its mouse pad. This will zoom the view over whichever area of the map your cursor is resting.



Now, we'll look at zooming (making the objects in the map appear larger on the screen). Zooming in on different areas of the map can be controlled by using four different methods:

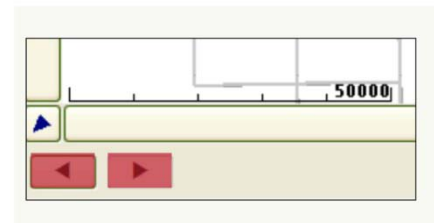
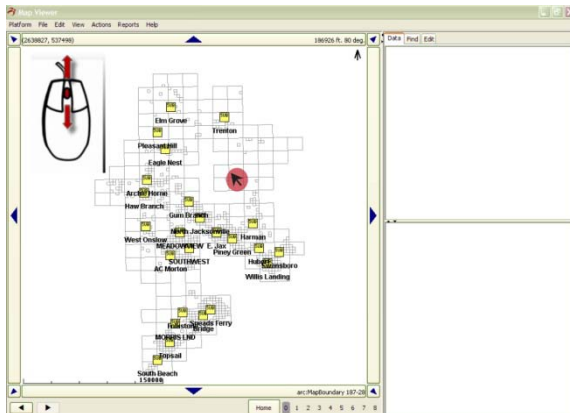
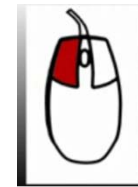
1. First, by left clicking on the elevator buttons in the lower right corner of the map window. These provide a number of different preset zoom levels. Left click the "Home" button to get back to the furthest zoom level and center the map.



4. And lastly, the keyboard offers zooming options when using a mouse is impractical.



2. Second, assuming your mouse has a wheel, rolling the wheel forward will instantly zoom in and rolling it back will zoom out. Rolling the wheel will zoom the view over whichever area of the map your cursor is resting.



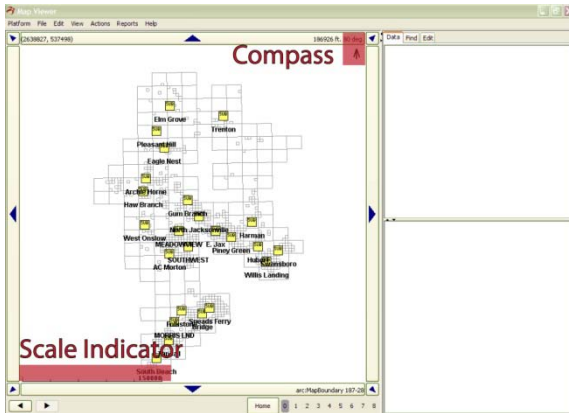
With both panning and zooming, left-clicking the arrow buttons in the lower-left section of the map window allow you to move backward or forward between previous pan and zoom selections, much like a web browser.

Go ahead and take 5 -10 minutes to use these techniques to navigate around the map. Practice zooming all the way down to individual poles, zooming back out and then panning around and doing the same thing again.

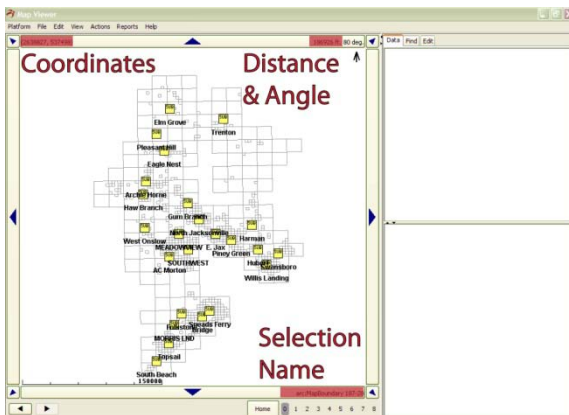
3. Third, you may hold down the right mouse button and then slide the mouse forward or

There are several areas of the Map Window that display information.

First, we have a scale indicator and a compass displayed directly on the map itself:

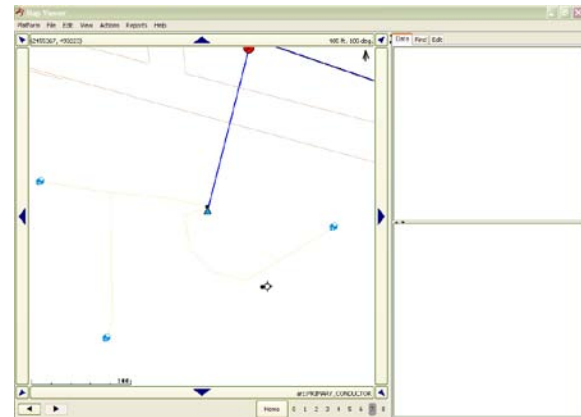


In addition, three other areas of the workspace also display information. The top left corner displays the coordinates of the mouse cursor. The top right corner, next to the compass coordinates, displays the distance and angle of the cursor from the current selection. The bottom right corner displays the name of the current selection.

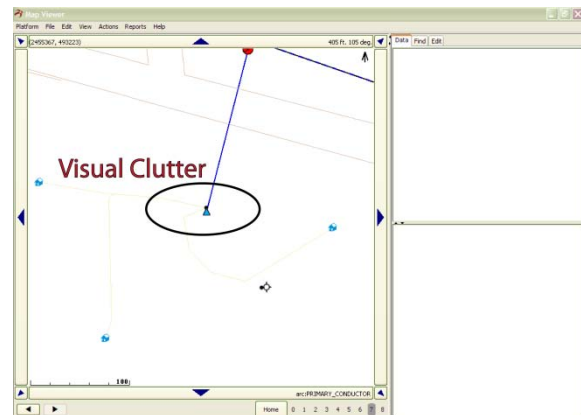


Part B: Selecting Objects and Viewing Data

Next, we'll turn our attention to selecting and viewing data with the Map Viewer. First, pan and zoom to find an area of the map that contains a utility pole housing a transformer.



Now, a common problem with any map display is visual clutter. Clutter occurs when you have several objects to choose from within a confined space, making it difficult to easily view or select any one object.



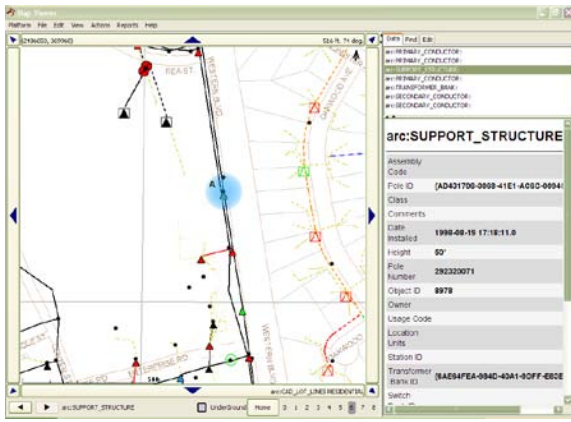
The

Partner Map Viewer utilizes a simple method to overcome this issue.

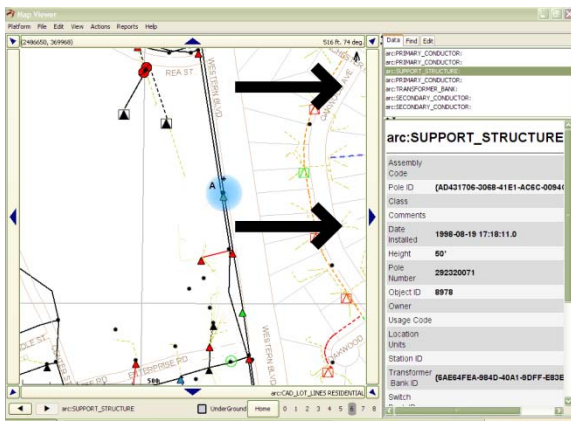
As we move our cursor over the utility pole, you will notice objects on the map that are animated with a pulsing motion or highlighted. In the Partner System, we refer to this as "indication highlighting." This is simply a preview of the objects that would be selected if you were to left-click on this area of the map.

Move your cursor over the pole itself. The pulsing motion of the objects indicates that the transformer and the power lines associated with the pole would end up being selected, populating our list of selected objects.

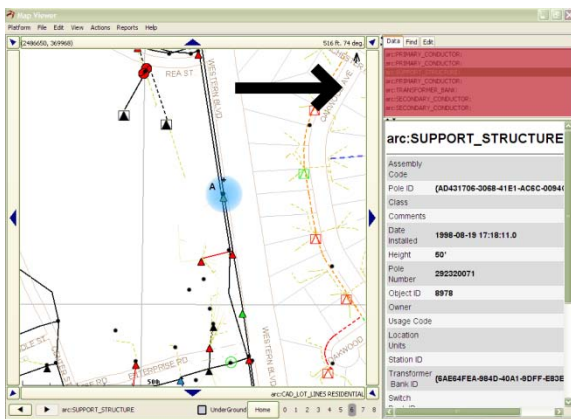
Go ahead and left-click on the pole.



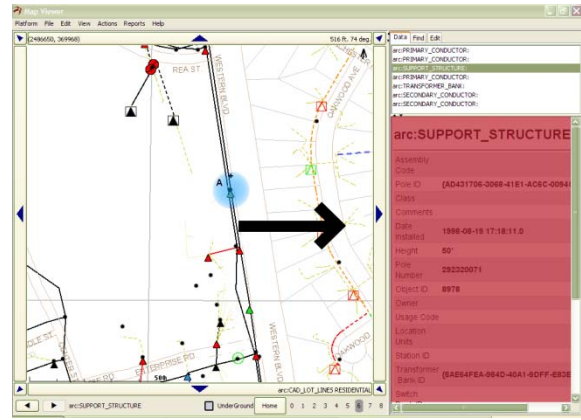
After left-clicking, you will notice that, for the first time, our other two windows are displaying information.



The upper right window is displaying a list of every object that can be selected individually (the pole, the transformer, the lines, etc.).

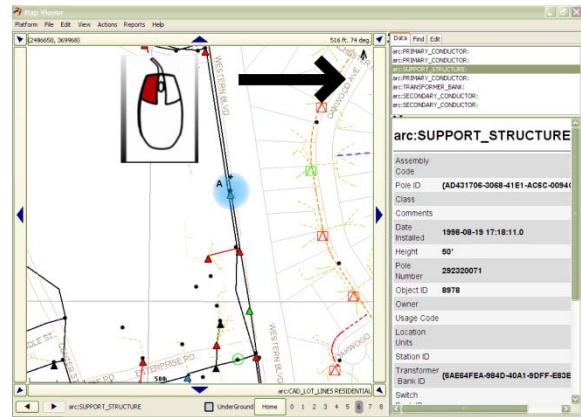


The lower right window is displaying detailed information about the selected object.



Selecting these objects individually is very simple and can be done using one of three ways.

First, you can simply go to the data window and left-click on the specific item you want in the list.

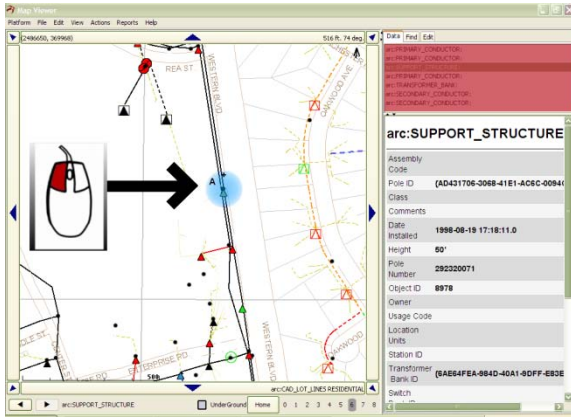


Second, you can right-click on your main selection in the map window and get an instant drop-down menu that mirrors the list of objects in the data window.

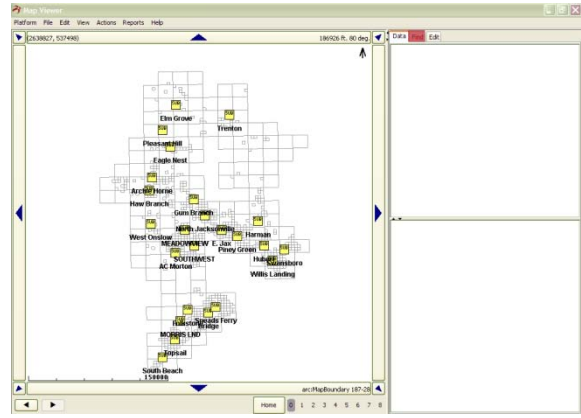


Finally, you have the option of continuously left-clicking on the item you are trying to select on the map, which will scroll you through the items in the data window

until you come to the item you want and stop clicking.

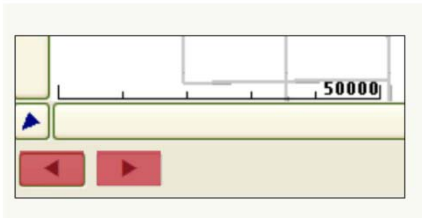


right of the “Data” tab.



Go ahead and practice selecting the pole using these various methods, moving on when you become comfortable with them all. You will notice that the selected object is also animated or highlighted in magenta in the map window. This provides a visual reference to its location.

When selecting objects, the arrows buttons in the lower left corner allow you to go backward and forward through previous selections, similar to a web browser.

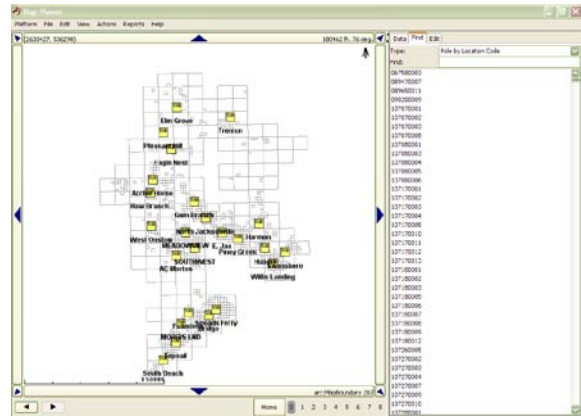


Part C: Using the Find Window

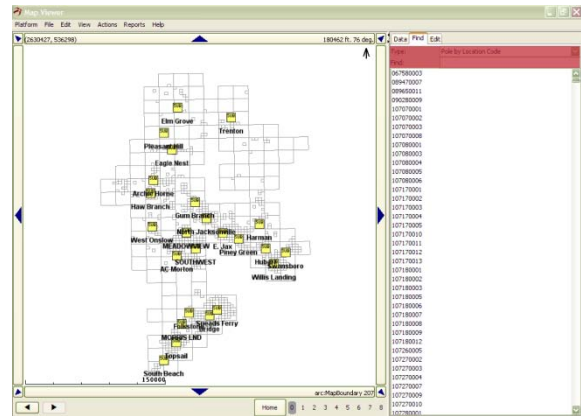
Up to this point, we’ve made our selections by manually navigating the map and visually finding an area we’re interested in. But what happens when a service truck needs to locate a specific pole number or transformer? Or when a customer service representative needs to find information on a customer’s location? These situations require a faster method of selection.

The Partner Map Viewer provides this capability by including the “Find” window. In the Upper right window, you will notice the “Find” tab directly to the

Left-clicking the tab will bring up the Find window.



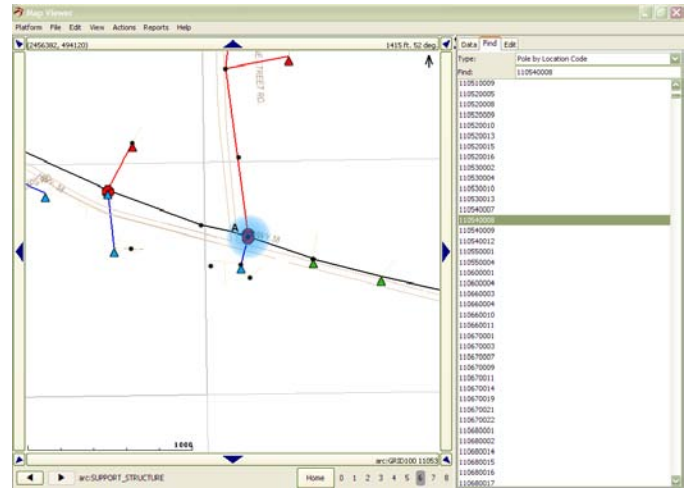
Once the window is open, we can see two fields used to define our search.



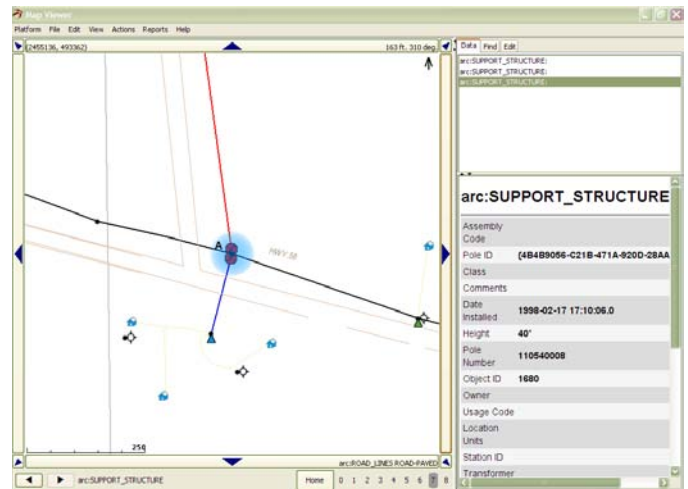
The first field is the Type Field. Left-clicking on this field displays a drop down menu of the available searches, listed by type (displayed at the top left of the next page).



specific search, for example, a customer last name or line section. In our example, we are searching for a location using a pole tag number. Let's assume the number is 110540008. Left-clicking the Find Field will display a blinking cursor. Now we can type in 110540008 and hit enter on the keyboard.



This instantly displays and centers the pole's location in the map window. Additionally, if we return to the data tab, we can see all of the information about this location listed in the lower right data window.

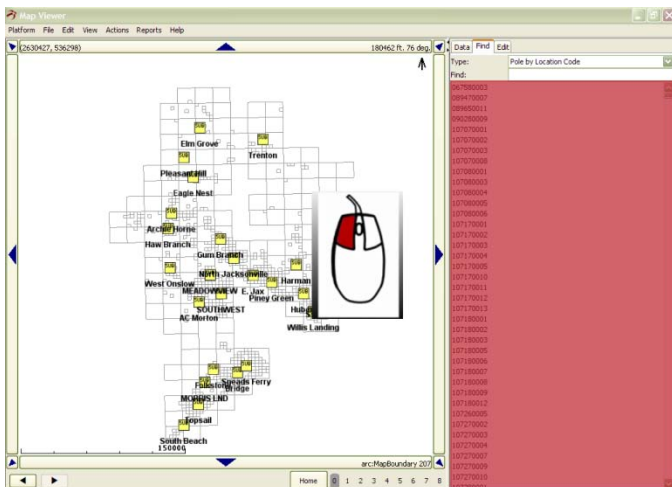


Now we've covered the basics for using the Partner Map Viewer.

You will notice, the user has several options when defining a search. As an example, we'll select "Pole Tag Number" by left-clicking.

After making our selection, we can choose a specific name one of two ways.

First, we can scroll through the entire list of names by using the controls to the right of the window and double left-clicking to select.



Or we can further refine our search by using the Find Field. The Find field is provided for users to input a